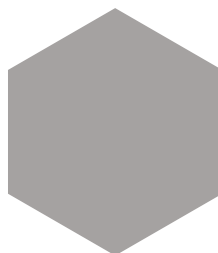


LIMPET



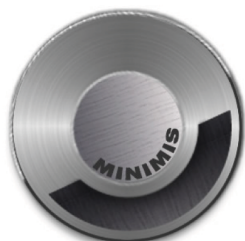
BOLT



SPECK



PLOOK



PILLBOX



CYST

INSTALLATION INSTRUCTIONS

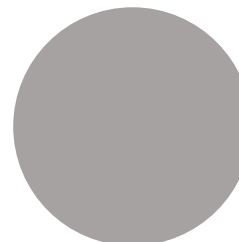
ii minimis
MINUSCULE LIGHT



PORE



STOMA



MINT

MINIMIS RESERVES TO MODIFY THE INSTRUCTIONS WITHOUT ADVANCE NOTICE. COPYRIGHT 2023. THE MINUSCULE CORPORATION



WWW . MINIMIS . LIGHTING
INFO @ MINIM . IS
+1 305 503 5779

1661 WEST AVE
NO. 398002
MIAMI BEACH, FL 33239



ANY DOUBTS? CONTACT US FIRST. CONSULT US AT: +1 305 503 5779



DIMMING AT THE MAINS SIDE (120V / 220V) WILL INVALIDATE YOUR WARRANTY.

OPERATING ON A 12VAC TO 12VDC CONVERTOR WILL INVALIDATE YOUR WARRANTY.

MALFUNCTION AND/OR DAMAGE TO PRODUCT DUE TO EMPLOY OF INCOMPATIBLE OR DEFECTIVE DIMMING SYSTEM / PROTOCOL, OR DUE TO DISREGARD OF INSTALLATION

INSTRUCTIONS WILL NOT BE COVERED UNDER WARRANTY.

CONTACT MINIMIS FOR RECOMMENDED POWER SOURCES.

IF FIXTURE IS TO BE INSTALLED WITH A DIMMER OR DIMMING CONTROL SYSTEM, CONSULT A DIMMING SYSTEM MANUFACTURER WITH MINIMUM LOAD BEFORE INSTALLING.

FLECK SUPPLEMENT: PAGE 9

POX SUPPLEMENT: PAGE 10

POWER KIT SUPPLEMENT: PAGE 11

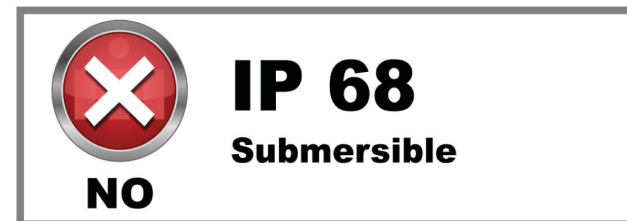
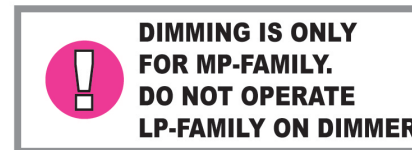
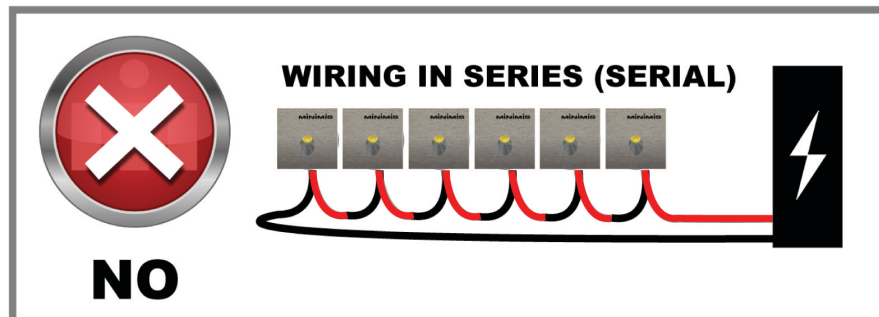
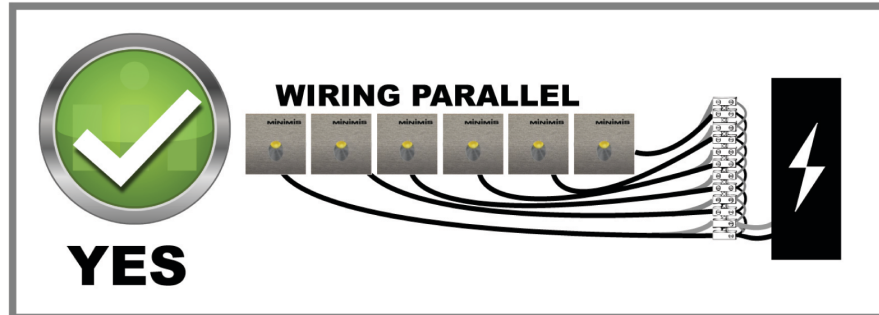


WWW.MINIMIS.LIGHTING
INFO@MINIM.IS
+1 305 503 5779

1661 WEST AVE
NO. 398002
MIAMI BEACH, FL 33239



NOTE: FAILURE TO ABIDE BY INSTRUCTIONS WILL LEAD TO FAILURE, AND INVALIDATE YOUR WARRANTY. FOR ALL LUMINAIRES - FAILED AND STILL OPERATING.

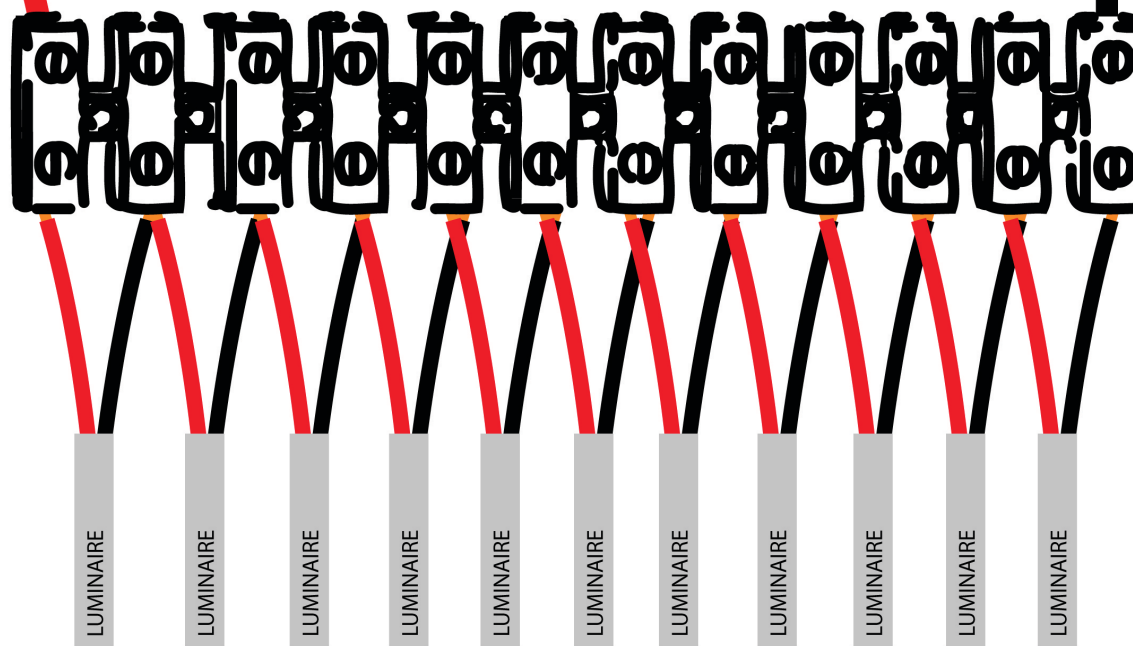


-
+
to power source



NO

DO NOT WIRE IN SERIES



ii minimis
MINUSCULE LIGHT

WWW.MINIMIS.LIGHTING
INFO@MINIM.IS
+1 305 503 5779

1661 WEST AVE
NO. 398002
MIAMI BEACH, FL 33239



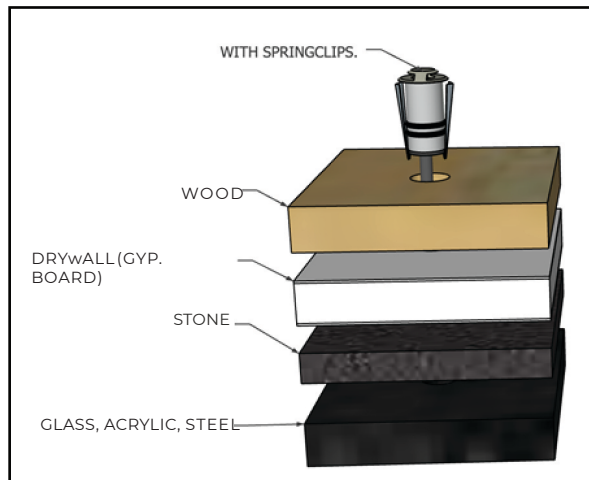
SAFETY US-CA
SURETY US-CA
E526294



FIRST, DETERMINE WHAT MATERIAL YOU'RE INSTALLING INTO.

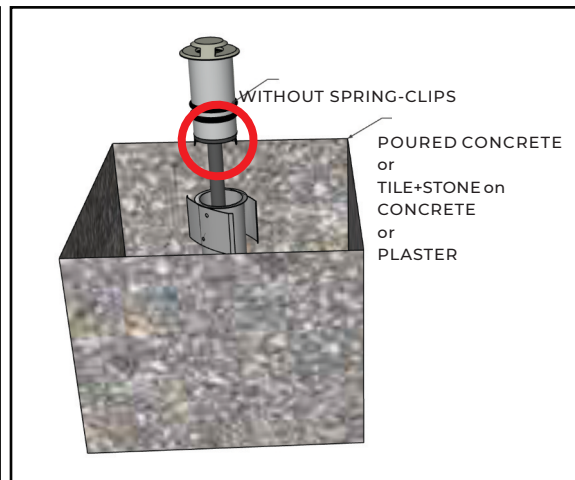
OPTION ONE

DRILLING A HOLE?



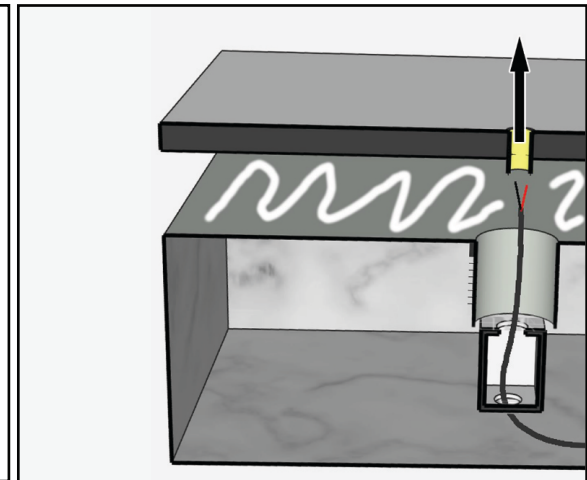
OPTION TWO

POURING CONCRETE / PLASTER?



OPTION THREE

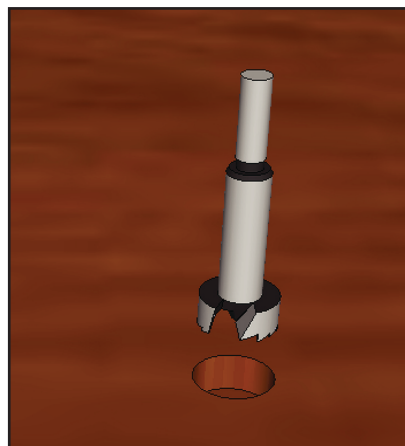
INSTALLING TILE?



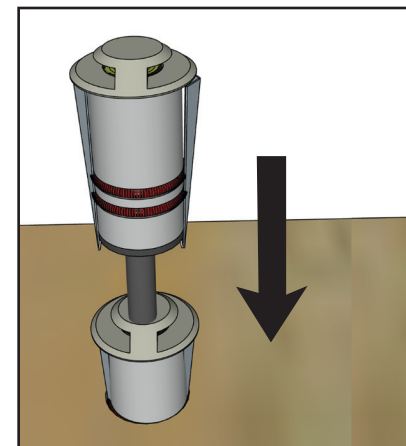
OPTION ONE - IN ANY DRILLABLE MATERIAL



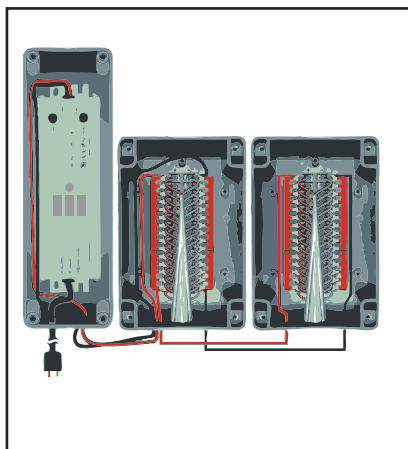
Do not remove torsion wings.



Drill or water-jet a 17mm-diameter hole.



Bridge connections with cable whip, observing parallel polarity, and press luminaire into place. If hole is too large, place one or two provided silicone O-rings into the channels of the barrel housing of the luminaire, to add more torsion hold.



Connect all luminaires in parallel to 12vDC power source.

We recommend the MINIMIS Power Kits.

RECOMMENDED (not included)

The MINIMIS Power Kit (UL listed)

- 12v DC IP67 transformer
- Weatherproof transformer enclosure
- Weatherproof terminal block enclosure
- Quick-jump bus-bars.

Available in configurations of:

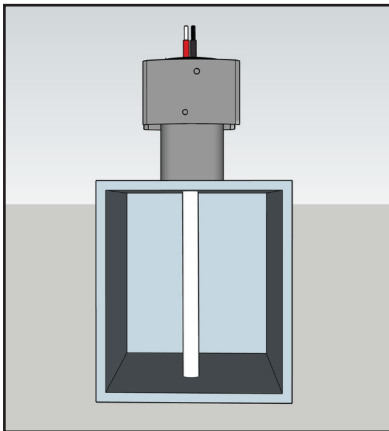
- 1 to 15 luminaires
- 16 to 30 luminaires

More information at: www.MINIM.IS/power

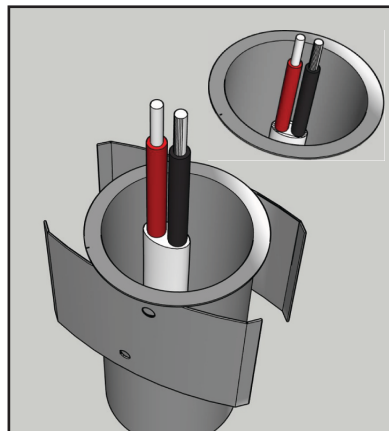
Contact us with any questions.

OPTION TWO - CONCRETE/PLASTER

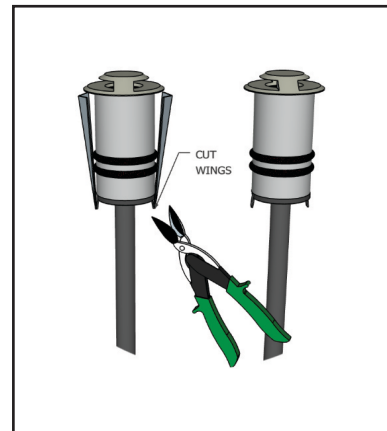
CONTACT US TO PURCHASE TRIM KIT



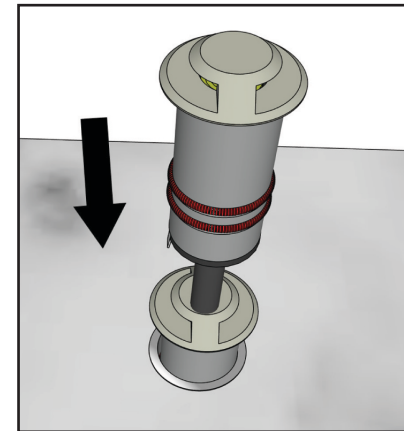
Set a standard junction-box and Trim Kit into place at desired position and elevation, ensuring top flange of Trim Kit will be flush with finished surface of concrete/plaster. If necessary, use length of PVC pipe between Trim Kit and J-Box to achieve desired height. Ensure cable whip extends beyond Trim Kit.



Pour/apply concrete/plaster, smoothing and blending to ensure that none remains on top of flange of Trim Kit. Ensure top of flange of Trim Kit is flush, or flush-recessed, but NOT PROUD with top of the concrete/plaster. Allow concrete to set.



Cut torsion wings off of fixture, and place one provided O-ring into channel on barrel of fixture housing. Discard end-cap / hole-cover from Trim Kit.

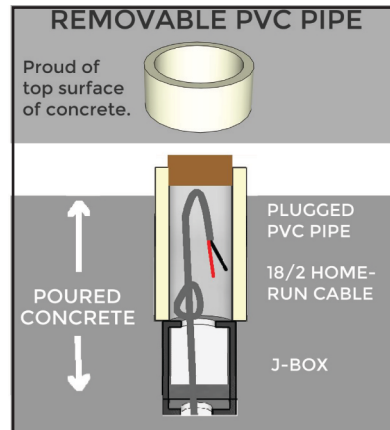


Once concrete/plaster has set, ensure inside of Trim Kit is totally devoid of all debris. Using appropriate gel-filled or other water-proof butt-splices suitable for your local building code, splice pigtail of luminaire to cable whip, observing parallel polarity. Feed pigtail in and press luminaire into place.

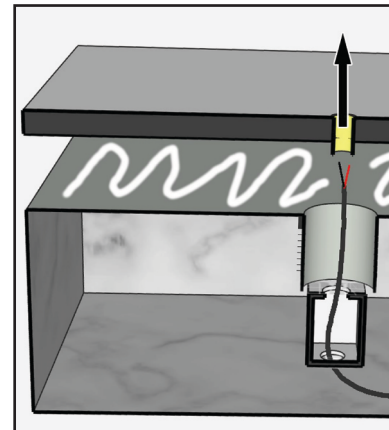
OPTION THREE - IN TILE



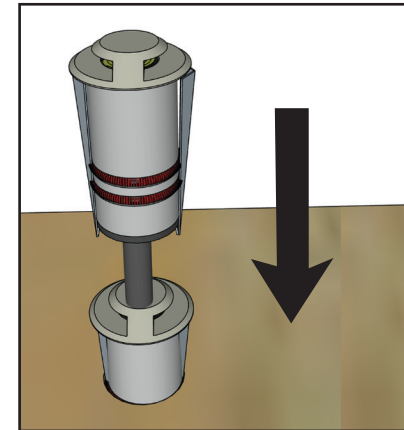
In this application, do not remove the torsion wings; they will be used to maintain friction, once pressed into your hole.



Set a standard junction-box and a length of PVC pipe of 2-inch (50mm) ID into place at desired position & elevation, ensuring top of PVC pipe is well-above finished surface of concrete. Do not mechanically fasten PVC to J-Box, rather attach with silicone for easy future removal. Ensure sufficient length of cable whip extends past top of PVC pipe.



Once concrete has set, discard PVC pipe. Pre-drill a 17mm hole in your tile at correct position. Apply grout or adhesive and lower tile into place, while cable whip up through hole in tile. J-Box may be optional; consult your electrician and flatworker.



Using appropriate gel-filled or other water-proof butt-splices suitable for your code, splice pigtail of luminaire to home-run cable, observing parallel polarity. Feed pigtail in and press luminaire into place. If hole in tile is too loose, add additional provided silicone O-ring to body of luminaire for added friction.

FLECK SUPPLEMENT

IN ADDITION TO FOLLOWING ALL INSTRUCTIONS ON PREVIOUS PAGES, THE FOLLOWING INSTRUCTIONS MUST BE ADHERED TO, IN ORDER TO AVOID INVALIDATION OF YOUR WARRANTY.

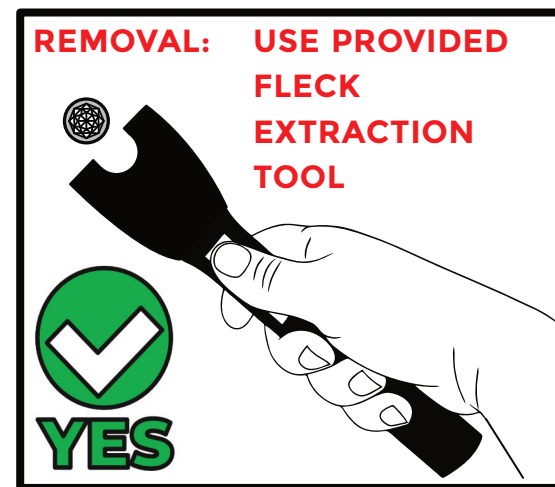
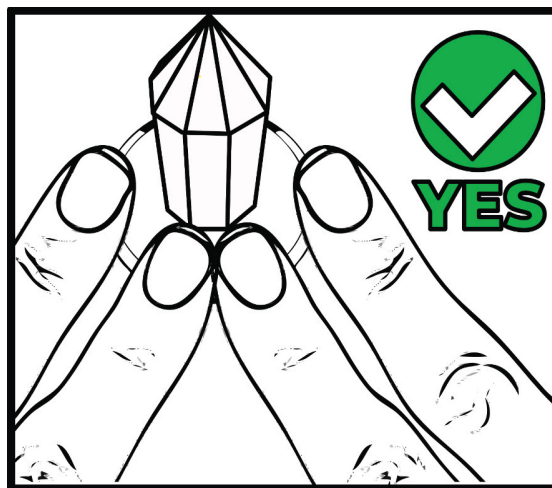
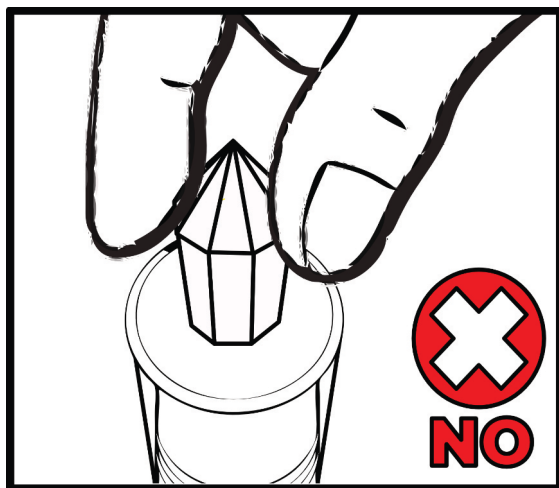
BROKEN CRYSTAL IS NOT COVERED UNDER WARRANTY, UNDER ANY CIRCUMSTANCES.

THIS FIXTURE FEATURES 30% LEAD CRYSTAL, WHICH IS FAR MORE FRAGILE THAN GLASS. SPECIAL HANDLING REQUIREMENTS APPLY.

DO NOT APPLY ANY FORCE TO CRYSTAL. DO NOT TWIST, PUSH, OR PULL CRYSTAL.

TO INSTALL, POSITION, OR REMOVE, APPLY ALL FORCE TO BEZEL

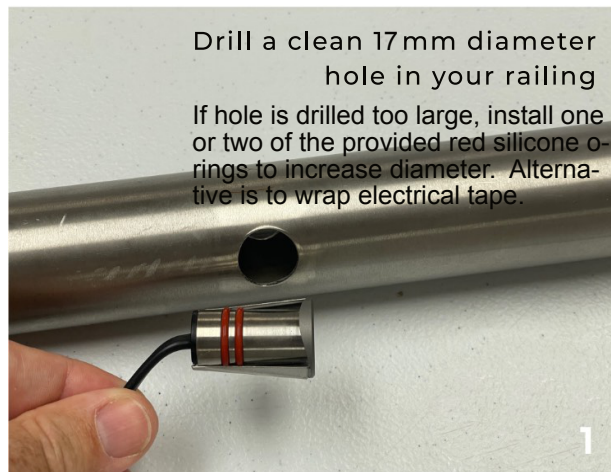
TO REMOVE FIXTURE, USE THE PROVIDED FLECK EXTRACTION TOOL.



POX SUPPLEMENT

For installing POX in 40mm or 50mm railing.

Not suitable in environments prone to tampering.

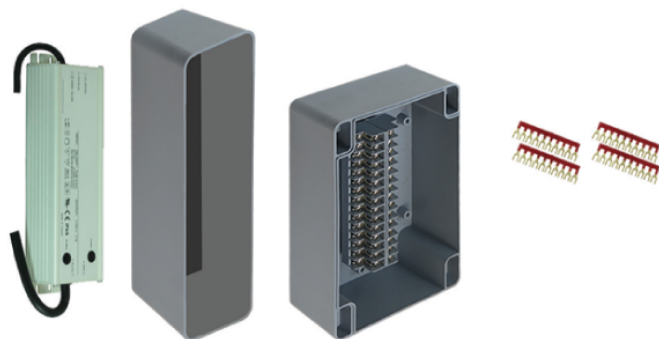


POWER KIT SUPPLEMENT

www.MINIM.IS/power

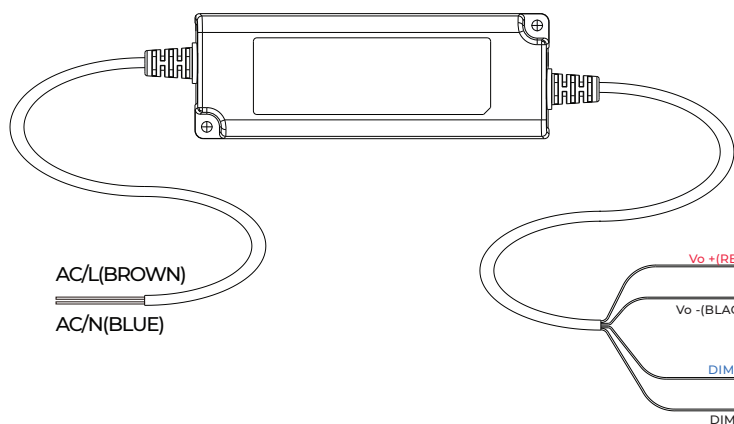
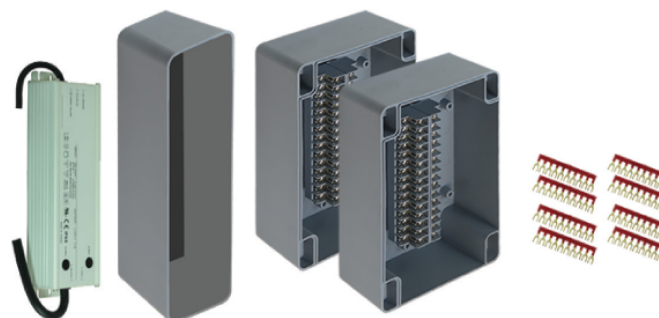
PKMP0115

MINIMIS MP POWER KIT
FOR 1 TO 15 APERTURES



PKMP1630

MINIMIS MP POWER KIT
FOR 16 TO 30 APERTURES



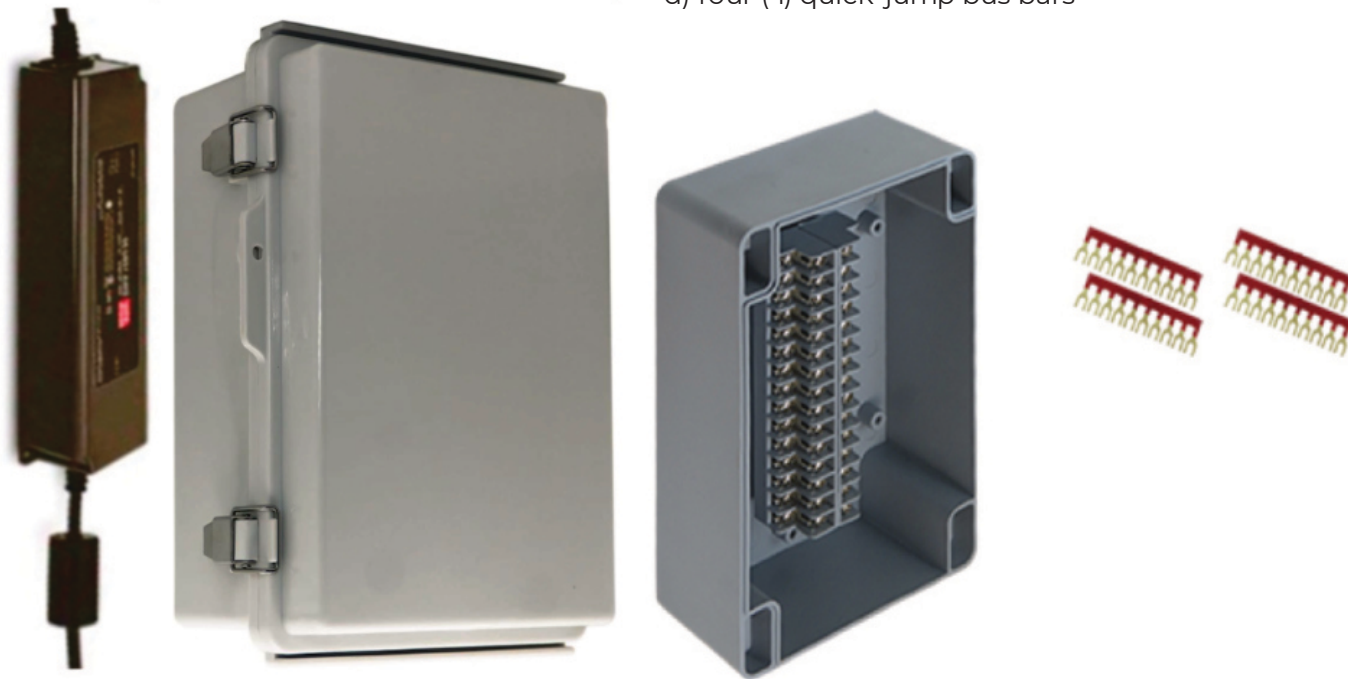
Luminaires are not
individually addressable`



MP SERIES POWER KIT for 1 to 15 apertures

PKMP0115

- a) one (1) 60-watt 12vDC transformer
- b) one (1) weatherproof enclosure + lid for transformer
- c) one (1) weatherproof 15-pair terminal enclosure + lid
- d) four (4) quick-jump bus bars



Note:

- 1) configurations of fewer than three (3) lights require use of one (1) MINIMIS load resistor (RSTR-LOAD) per power kit, to meet driver's minimum load.
- 2) driver cannot accommodate more than thirty apertures. Accommodating more than thirty will invalidate your warranty.

For configurations of greater than 30 apertures, additional complete power kits are required.



WWW . MINIMIS . LIGHTING
INFO @ MINIM . IS
+1 305 503 5779

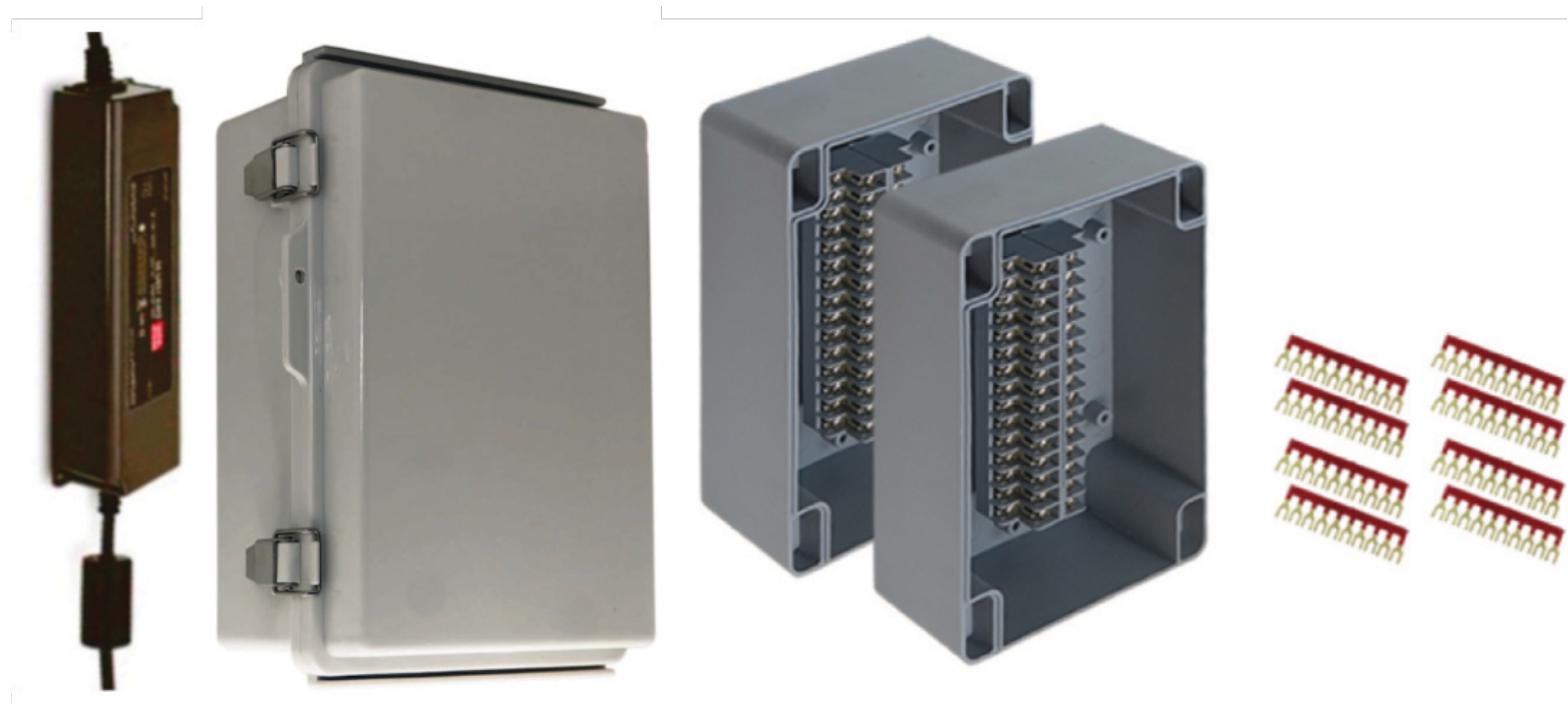
1661 WEST AVE
NO. 398002
MIAMI BEACH, FL 33239



MP SERIES POWER KIT for 16 to 30 apertures

PKMP1630

- a) one (1) 60-watt 12VDC driver
- b) one (1) weatherproof enclosure + lid for driver
- c) two (2) weatherproof 15-pair terminal enclosure + lid
- d) eight (8) quick-jump bus bars



Note:

- 1) configurations of fewer than three (3) lights require use of one (1) MINIMIS load resistor (RSTR-LOAD) per power kit, to meet driver's minimum load.
- 2) driver cannot accommodate more than thirty apertures. Accommodating more than thirty will invalidate your warranty.

For configurations of greater than 30 apertures, additional complete power kits are required.



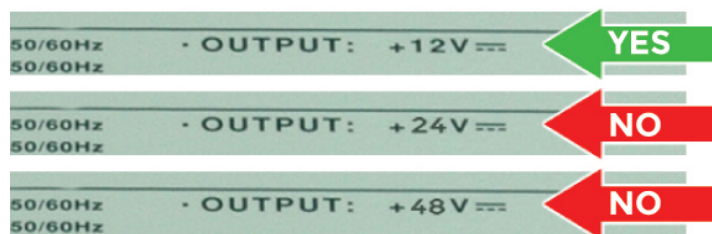
WWW . MINIMIS . LIGHTING
INFO @ MINIM . IS
+1 305 503 5779

1661 WEST AVE
NO. 398002
MIAMI BEACH, FL 33239

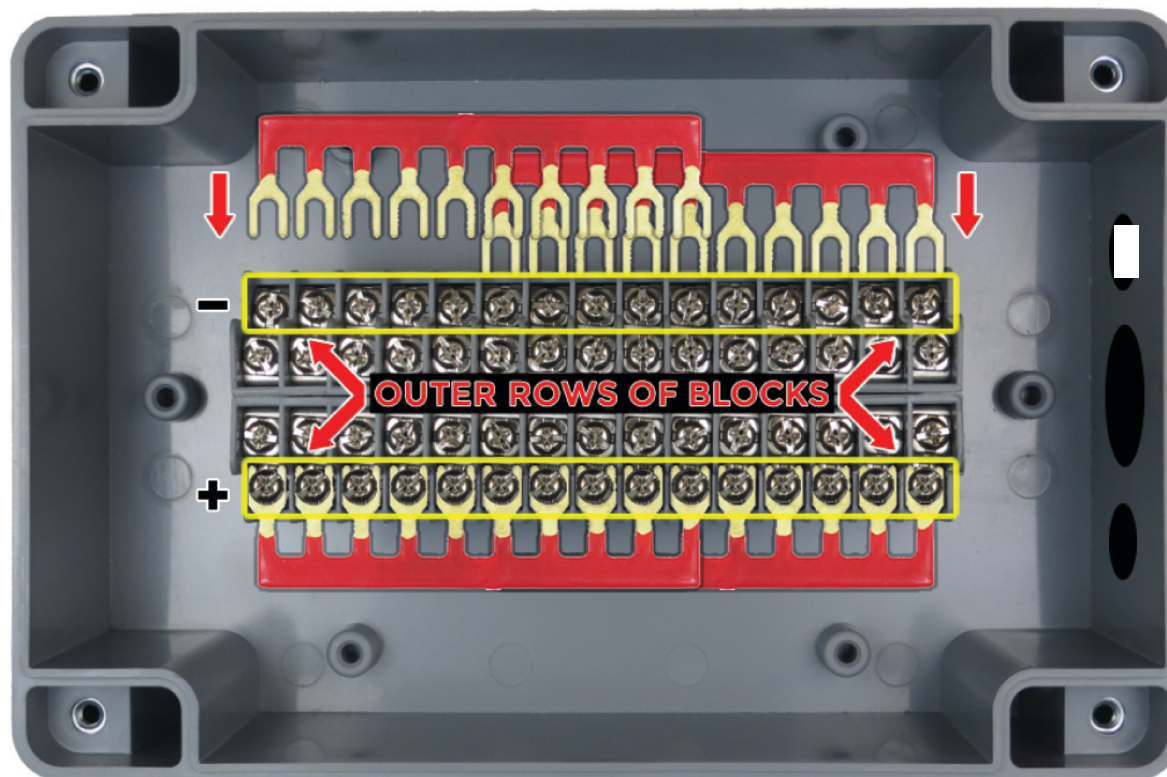


PRE-INSTALLATION CHECKLIST

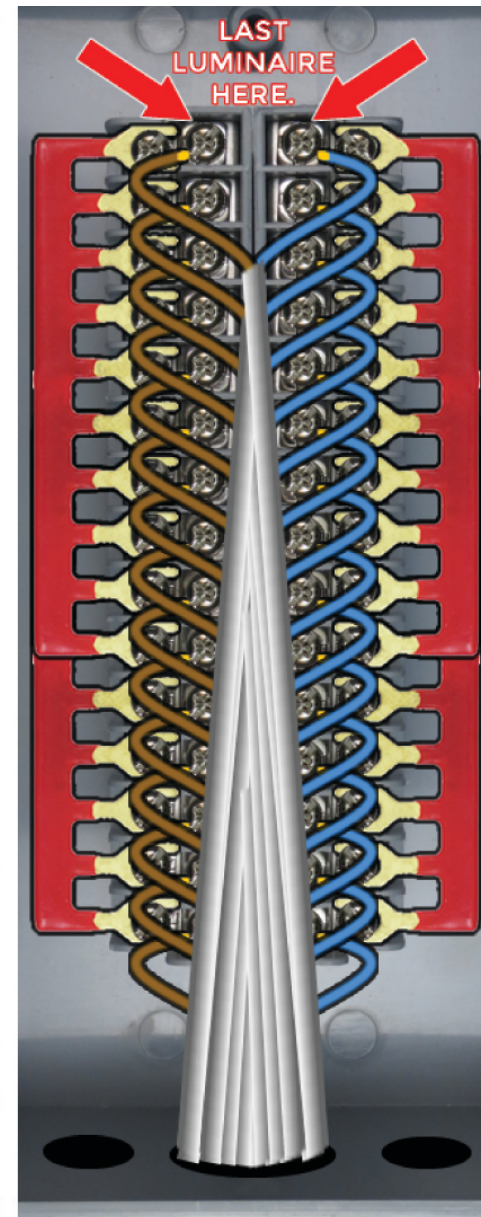
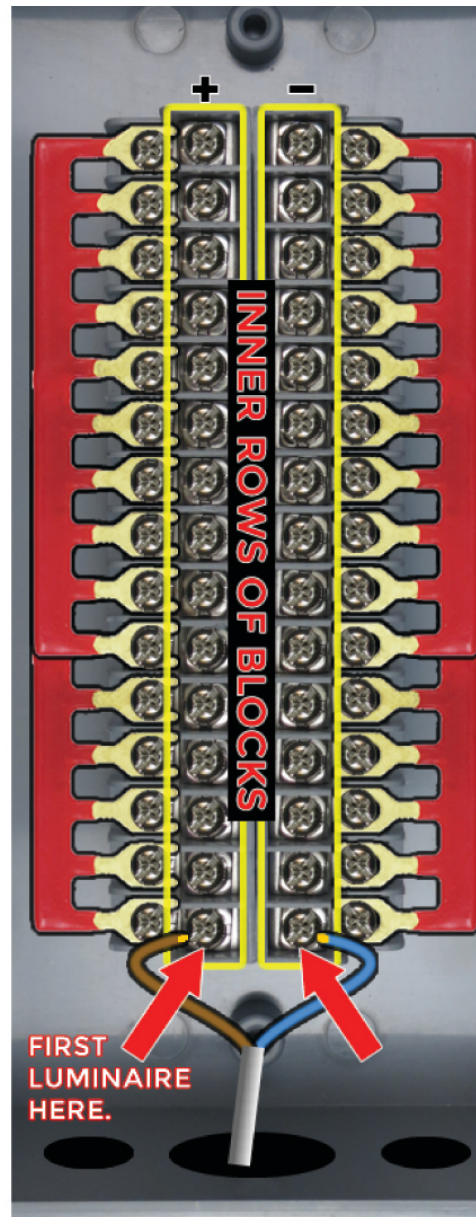
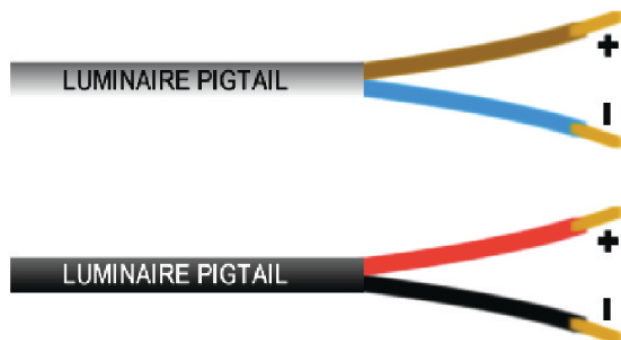
- 1) Always wear eye protection.
- 2) Wear gloves, if necessary.
- 3) Consult a licensed electrician about proper safety procedures and local and national codes and ordinances.
Ensure that the installing electrician understands voltage drop and wire-gauge limitations involving low-voltage lighting.
- 4) Ensure that your 110v/277v AC power source is operational and conforms to all codes and ordinances.
- 5) Inspect the labeling on the power supply to ensure that it is 12 volt DC. If it indicates 24 volt DC or any other voltage that is not 12 volt DC, do not continue with the installation, and contact us immediately.
- 6) Take stock of your kit items, ensuring that you have correct quantities of each item, per your kit



- 1) Set aside four red jumper-bars per terminal enclosure.
- 2) Loosen all the screws on the terminals
- 3) Insert the jumper-bars on the outer rows of blocks.
- 4) Allow jumper bars to overlap, ensuring that all fifteen blocks are bridged.
- 5) Tighten screws to secure jumper-bars in place.

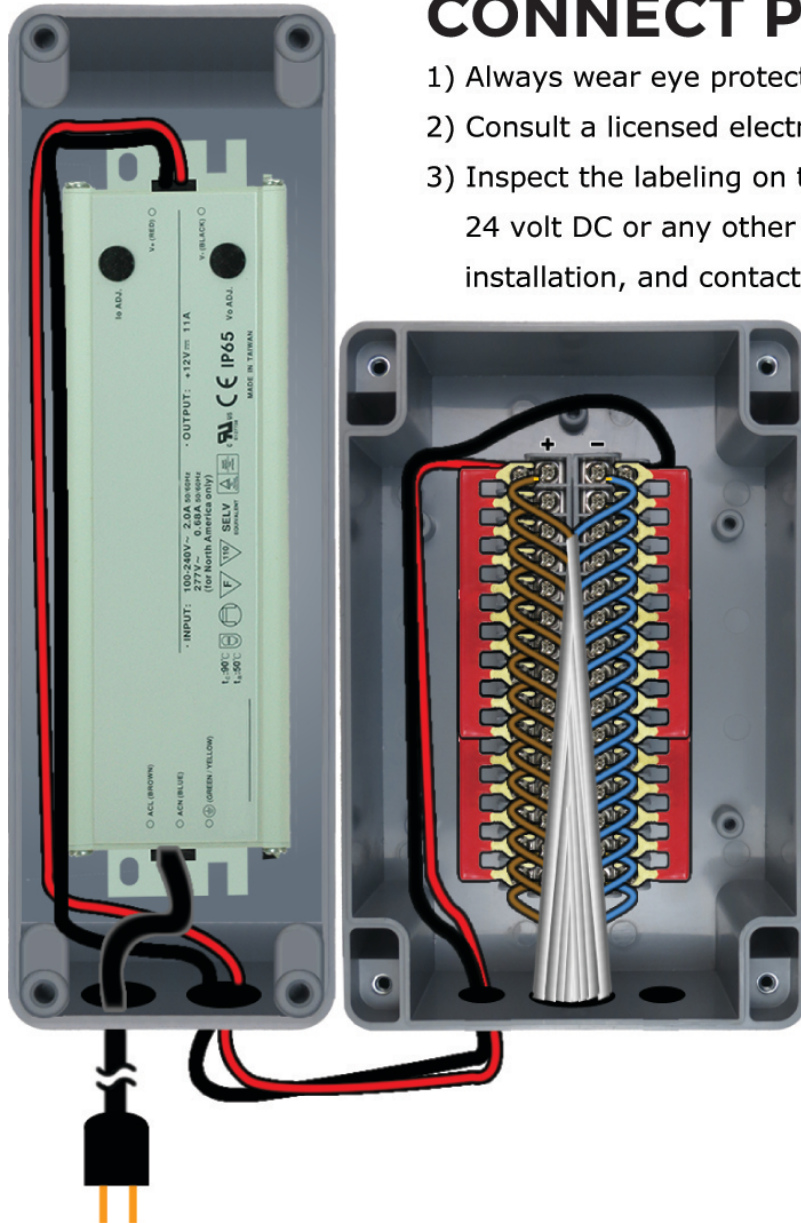


- 1) Strip the ends of the luminaire pigtails, exposing 1/4" (6mm) of copper lead.
- 2) Observing proper polarity, insert the pigtail leads into the inner rows of blocks, starting at the bottom.
- 3) Each consecutive pigtail overlaps the previous one. Screw blocks tight, to secure leads into place.
- 4) Repeat with the remaining fourteen luminaire pigtails, from bottom to top, illustrated to the right
- 5) Note: leads may come as:
 (+) Red and (-) Black, or
 (+) Brown and (-) Blue.



CONNECT POWER SUPPLY

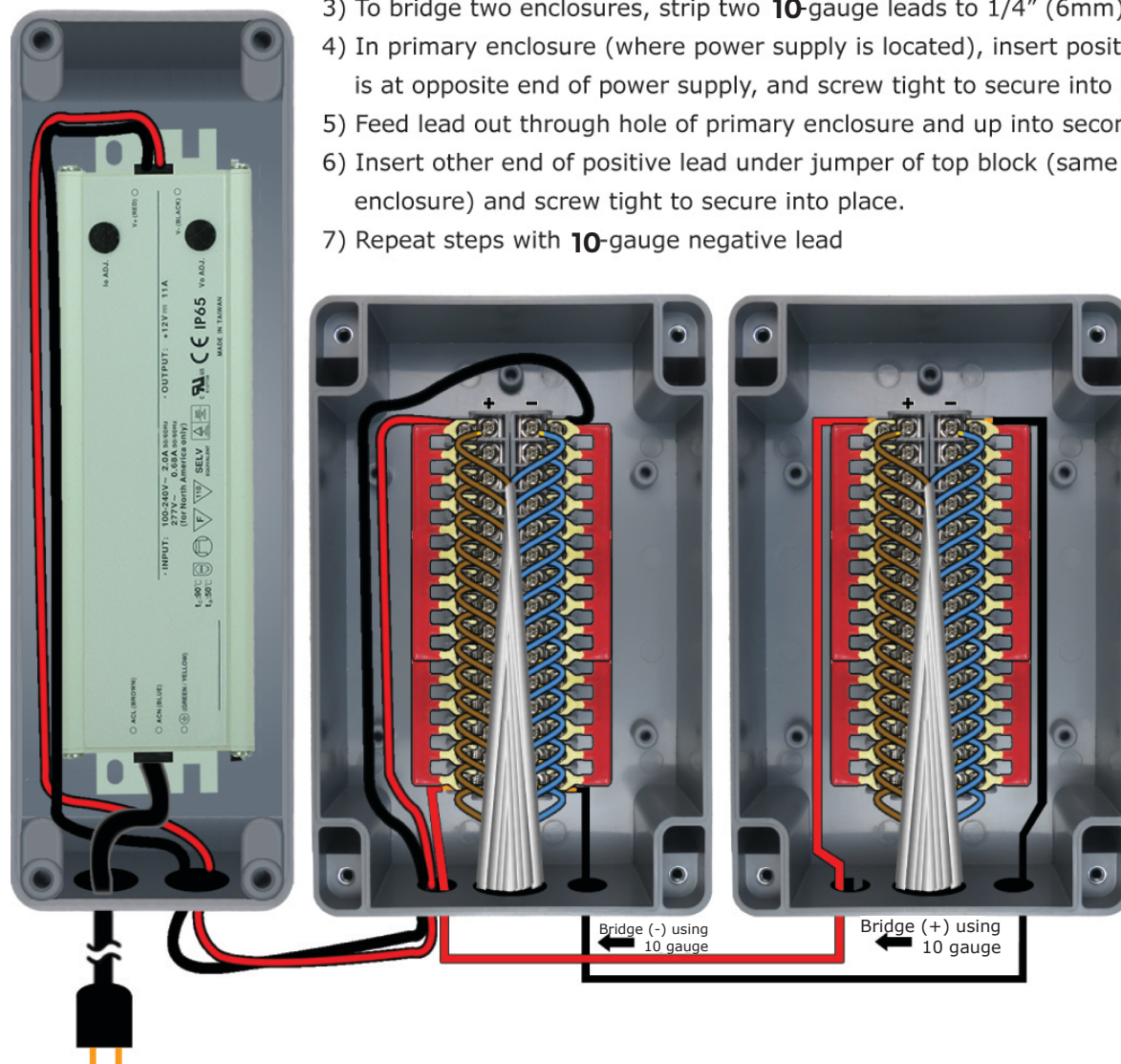
- 1) Always wear eye protection.
- 2) Consult a licensed electrician on local and national safety codes and procedures.
- 3) Inspect the labeling on the power supply to ensure that it is 12 volt DC. If it indicates 24 volt DC or any other voltage that is not 12 volt DC, do not continue with the installation, and contact us immediately.
- 4) Place 12volt DC power supply inside the included, separate power supply enclosure.
- 5) Feed line-voltage cable through bottom of enclosure and splice appropriate plug end for corresponding line voltage.
- 6) Strip leads (V+ red and V- black) from the 12 volt end of power supply to 1/4" (6mm) of exposed copper.
- 7) Feed 12 volt leads out of power supply enclosure and up into primary enclosure.
- 8) Noting correct polarity, insert leads into top pair of terminal blocks, under the jumper bars.
- 9) Screw blocks tight, securing power supply leads into place.



50/60Hz	• OUTPUT: +12V	← YES
50/60Hz	• OUTPUT: +24V	← NO
50/60Hz	• OUTPUT: +48V	← NO

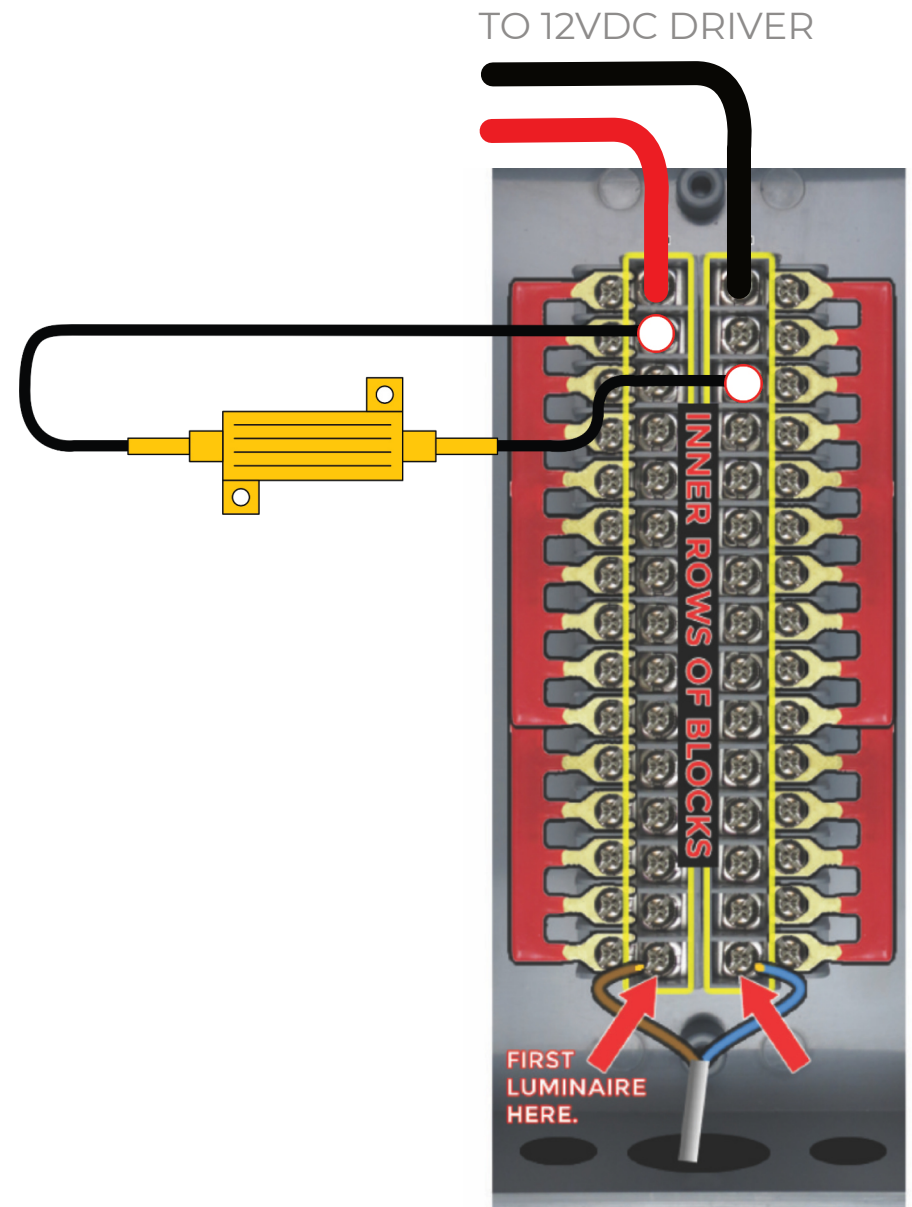
BRIDGING TWO ENCLOSURES

- 1) Always wear eye protection.
- 2) Consult licensed electrician to ensure compliance with local and national codes.
- 3) To bridge two enclosures, strip two **10-gauge** leads to 1/4" (6mm) exposed copper of appropriate length.
- 4) In primary enclosure (where power supply is located), insert positive lead under jumper of block that is at opposite end of power supply, and screw tight to secure into place.
- 5) Feed lead out through hole of primary enclosure and up into secondary enclosure.
- 6) Insert other end of positive lead under jumper of top block (same position as power supply lead in primary enclosure) and screw tight to secure into place.
- 7) Repeat steps with **10-gauge** negative lead



MINIMIS LOAD RESISTOR

OPERATING A QUANTITY OF FEWER THAN THREE (3) LIGHTS FALLS BELOW THE DRIVER'S MINIMUM LOAD REQUIREMENT. IN THIS CASE, THE MINIMIS LOAD RESISTOR (RSTR-LOAD) IS OBLIGATORY AS PART OF THIS CONFIGURATION. FAILURE TO OPERATE THE MINIMIS LOAD RESISTOR ON CONFIGURATIONS OF FEWER THAN THREE LIGHTS WILL INVALIDATE THE WARRANTY OF THE LIGHTS AND OF THE DRIVER.

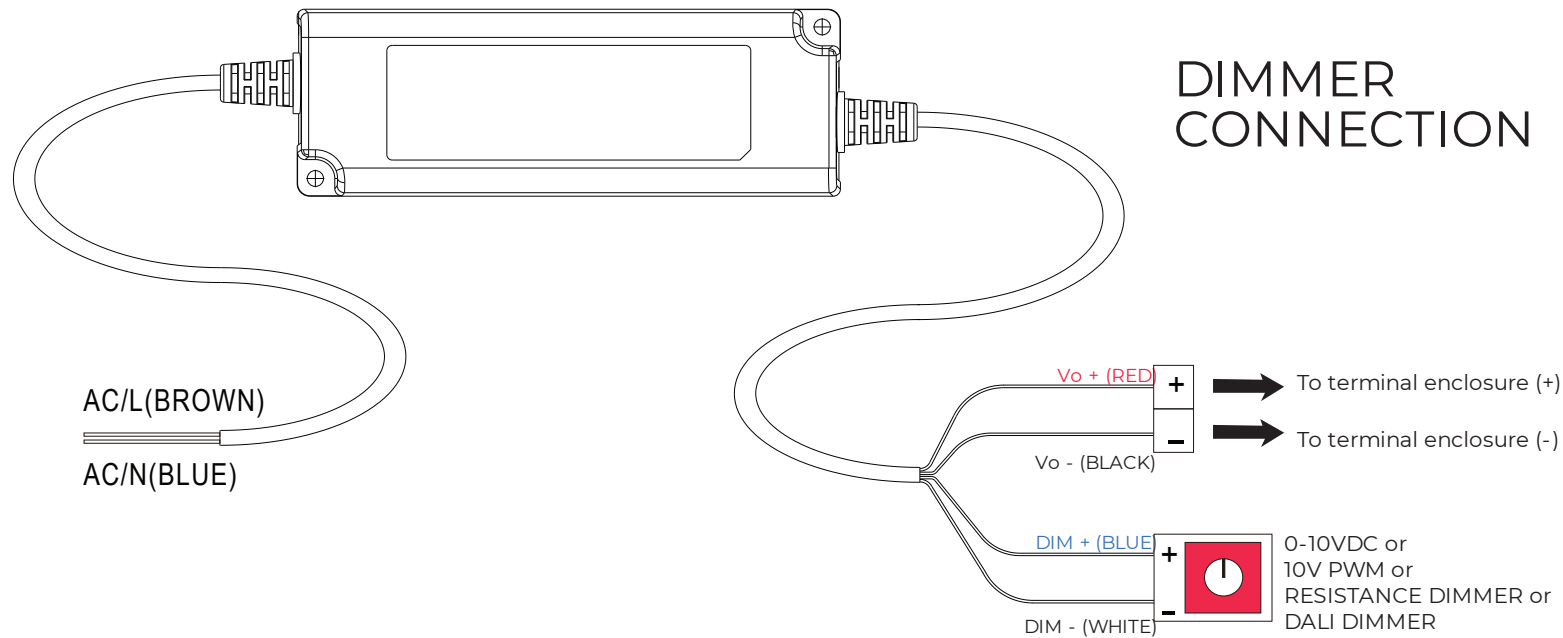


WWW . MINIMIS . LIGHTING
INFO @ MINIM . IS
+1 305 503 5779

1661 WEST AVE
NO. 398002
MIAMI BEACH, FL 33239



DIMMER CONNECTION



Before commencing any installation or maintenance, disconnect the power supply from the mains power. Ensure that it cannot be re-connected inadvertently.

A 10-15 cm clearance must be kept when an adjacent device is a heat source.

Mounting orientations other than standard orientation or operate under high ambient temperature may increase the internal component temperature and will require a de-rating in output current.

Current rating of an approved primary /secondary cable should be greater than or equal to that of the unit. Please refer to its specification.

For LED drivers with waterproof connectors, verify that the linkage between unit and lighting fixture is watertight so that water cannot intrude into the system.

Tc max. is identified on the product label. Please make sure that temperature of Tc point will not exceed limit.

DO NOT connect "DIM- to Vo-". DO NOT connect "DIM+ to Vo+" Doing so will invalidate your warranty on lights and driver kit.

DO NOT dim on the mains side. Doing so will invalidate your warranty on lights and driver kit.